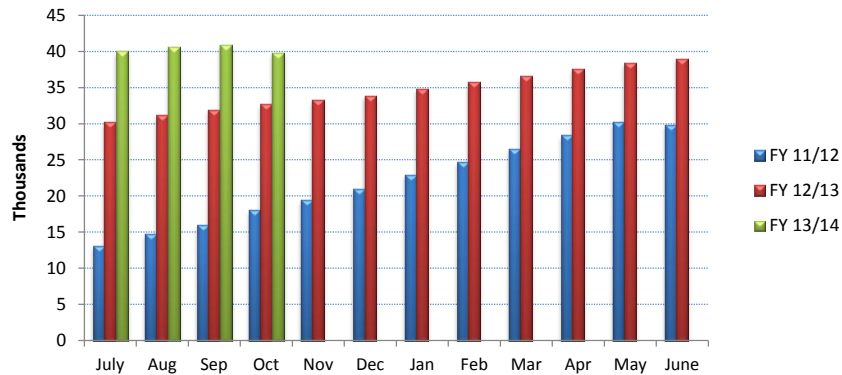


October 2013

LIHP

Current Enrollment¹: 40,563 Change: +391

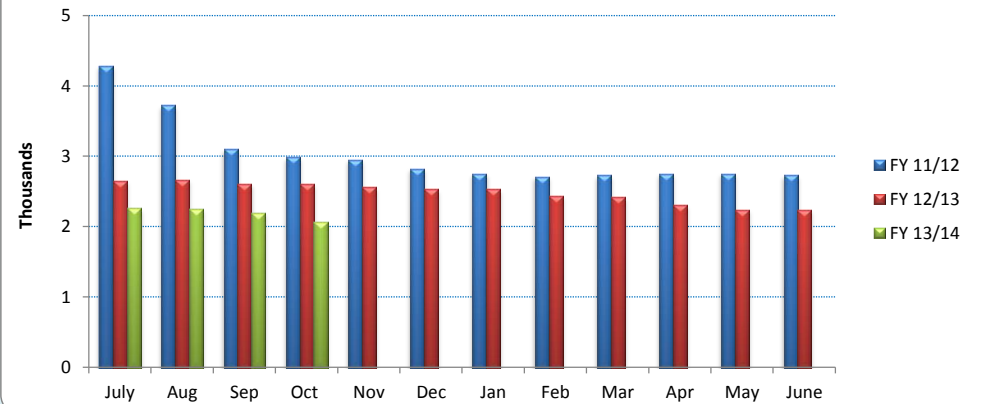
Currently Active LIHP



CMS

Current Enrollment¹: 2,092 Change: +43

Currently Active CMS



MCE Program Enrollment¹:

Total 10/13 Change Last Reported 09/13

Total currently active 40,520 +391 40,129

HCCI Program Enrollment¹:

Total 10/13

Total currently active 43

Homeless and Ryan White Enrollment

as of 10/31/13	Enrollees: ¹		Homeless		Change		Ryan White	
	LIHP	CMS	Number	Change	Number	Change	Number	Change
			5,813	-40	807	+7		
			8	-8	10	-6		

Mental Health Clinics (Cumulative Enrollment)²

as of 10/31/13	Approved		Denied		Pending	
	Number	Change	Number	Change	Number	Change
	1,149	+50	995	+21	47	+11

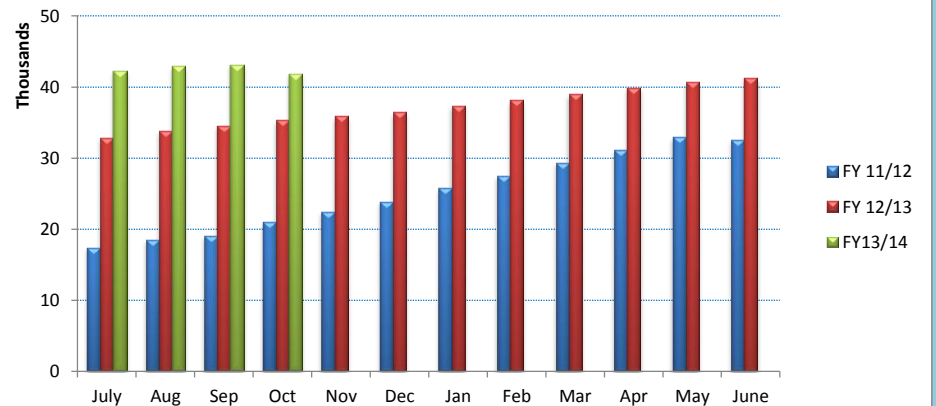
Pending Applications Overall²:

as of 10/31/13	Pending LIHP/CMS		Total includes HOS:		
	Number	Change	Number	% of LIHP/CMS Total	Change
	1,561	-46	723	46%	-53

Combined LIHP/CMS

Current Enrollment¹: 42,655 Change: +208

Currently Active LIHP & CMS



Data is a snapshot of point in time

Data Source and Comments: ¹ AuthMed reports. **Current enrollment** is the enrollment total as of the last day of the report month. The enrollment change is the difference between the enrollment reported on the current and prior month reports. There is an enrollment data lag because each month's enrollment is continuously updated throughout the fiscal year as cases are approved. ² CalWIN Management Reports.